

DIAMOND/CBN TOOLS

::Diamond Dressers::



A diamond dresser has single or multiple diamonds mounted on a tip of its shank by a sintering process, ensuring the selected diamond(s) won't loosen or fall out from the heat and pressure of use.

Diamond dressers are widely used for truing and dressing of conventional abrasive grinding wheels. A vast range of dressers from the typical single point dresser to rotary wheel dressers is available.

- **Single Point Dressers**

[click for standard specs](#)

Dressers with a selected diamond crystal mounted in one shank.

The point of the set diamond is concentric with the shank.

The diamond dresser should be attached at an angle of 10~15 degrees from the horizontal axis of the grinding wheel, at an angle of 10 degrees to the circumference of the wheel.

- **Multi Point Dressers**

[click for standard specs](#)

Dressers with several comparatively small and uniform diamonds mounted in one shank.

Dressing force is spread across multiple diamond points, achieving longer tool life, avoiding early tool failure and allowing fast dressing.

Particularly suit to use in rough finishes such as conical grinding, inner surface grinding, center-less grinding, dressing of convex surface and the side of grinding wheels.

- **Forming Dressers**

[click for standard specs](#)

Dressers with a single high quality diamond that has been polished to the required shape and dimensions to dress specific forms into conventional abrasive grinding wheels quickly and accurately.

Forming dressers have a wedge shape with an angle of between 55° and 70° to ensure that the corner of the diamond does not touch the grinding wheel.

- **Impregnated Bond Dressers**

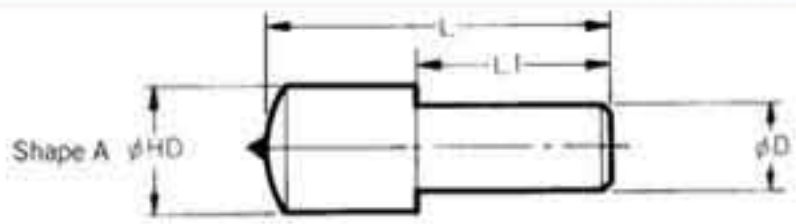
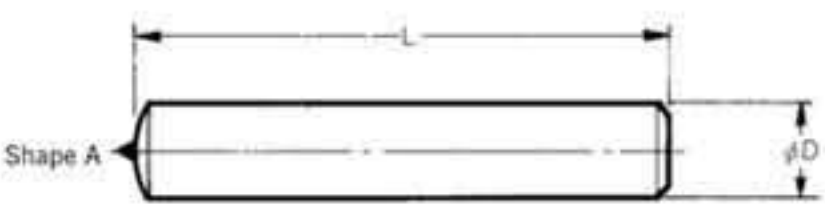
[click for standard specs](#)

Dressers with fine diamond grains fixed into the required shape and dimensions using a metallic bonding material, and attached to a shank.

Soft bond dresser is for adjusting the surface and the form of the abrasive grinding wheel for cylindrical applications and it can cleanly adjust the grinding wheels with sharp shapes.

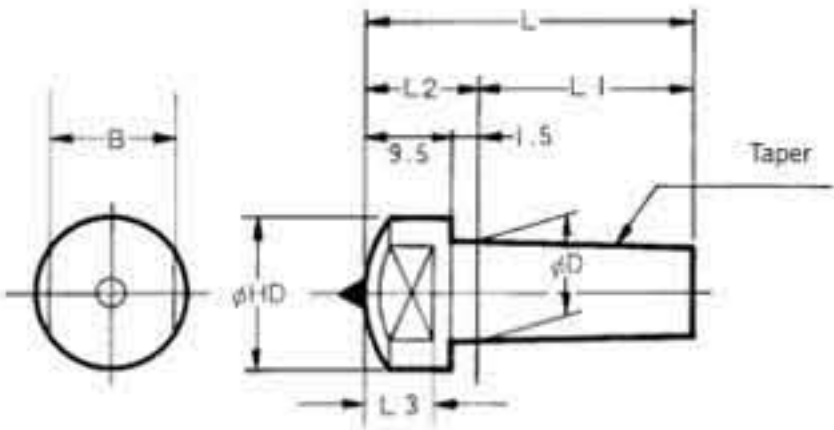
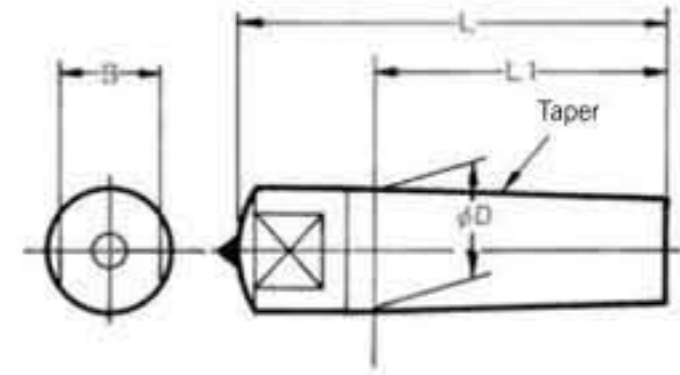
Hard bond dresser is suited to center-less grinding of large size grinding wheels and works evenly on the grinding wheel with great cost-performance.

SINGLE POINT DRESSERS



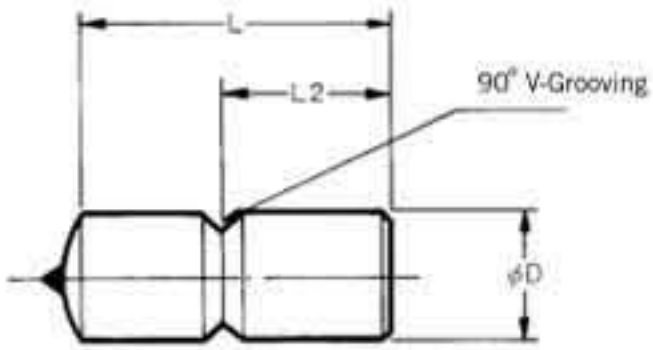
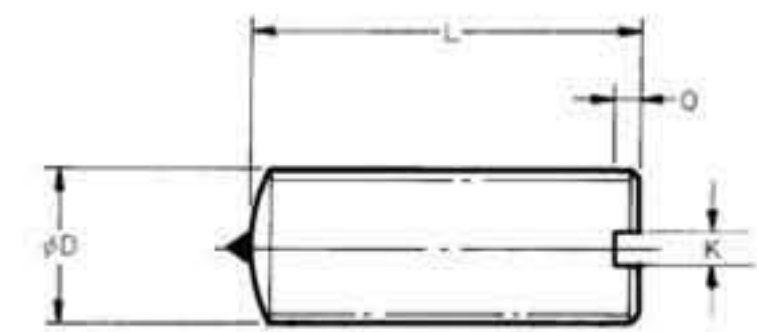
Code No	D	L
A1A-C2A-01	10	100
A1A-C2A-02	12	100
Others	Pls specify D and L	

Code No	D	HD	L	L1
A1G-C2A-01	6	12	27	12
A1G-C2A-02	8	12	26	16
Others	Pls specify D,HD,L & L1			



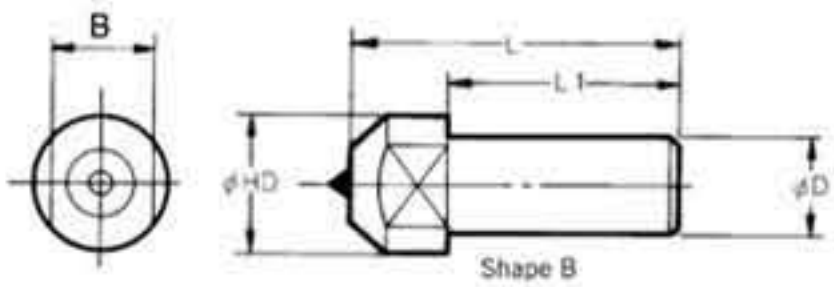
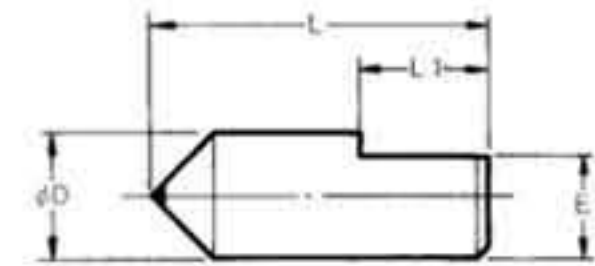
Code No	D	HD	L	L1	Taper
A1M-01	6.3	5	26	22	1/50
A1M-02	12	10	36	27	MT#1
Others	Pls specify D,HD,L, L1 & B				

Code No	D	HD	L	L1	L2	L3	B	Taper
A1M-01	9	12	31	21.5	9.5	7	10	MT#0
A1M-02	12	18	57	40	14	9	14	MT#1
Others	Pls specify D,HD,L, L1, L2, L3, B & Taper							



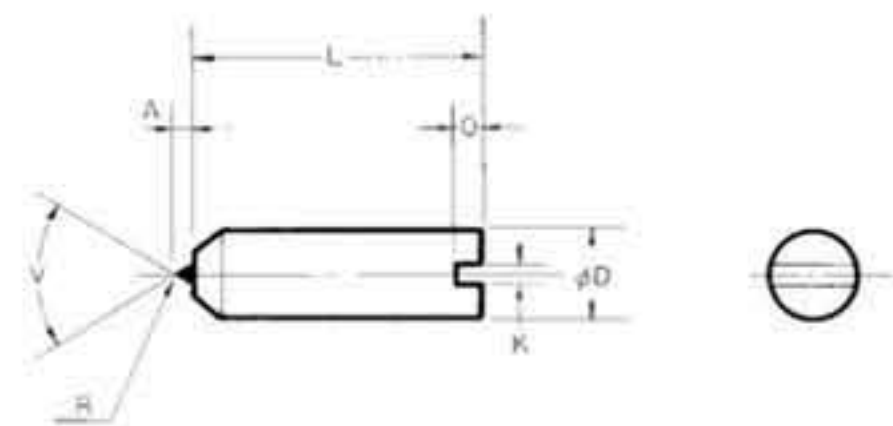
Code No	DxPitch	L	K	Q
A1S-01	MBx1.0	16	1	2
A1S-02	M12x1.5	40	2	2
Others	Pls specify DxPitch,L,K & Q			

Code No	D	L	L1
A2E-01	6	8	4
A2E-02	10	16	7
Others	Pls specify D,L & L1		



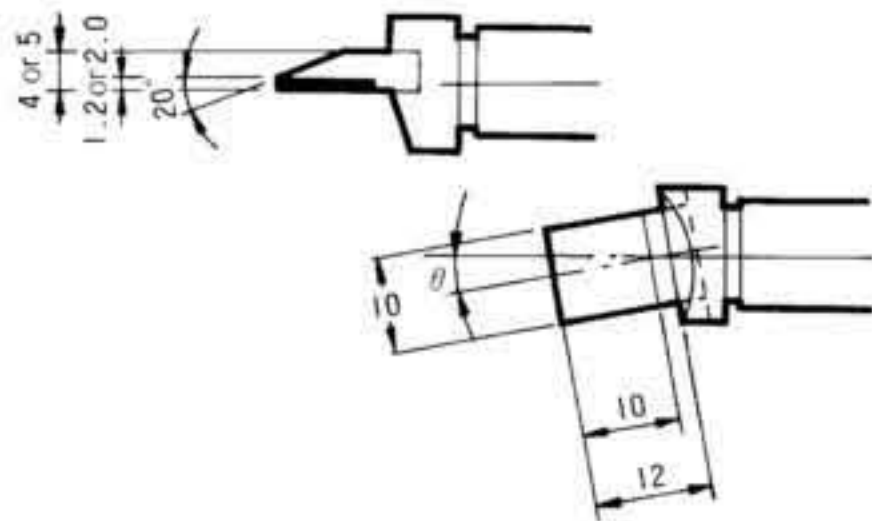
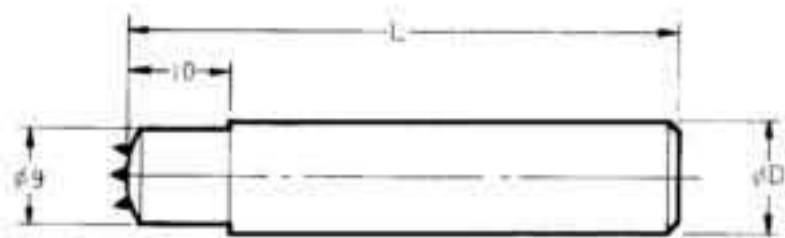
Code No	D	E	L	L1
A2C-01	11	9.5	40	3
Others	Pls specify D,E,L & L1			

Code No	D	HD	L	L1	B
A2H-CH3-01	6	12	27	12	8
A2H-CH3-02	11	16	35	20	13
Others	Pls specify D,HD,L, L1 & B				



Code No	D	L	V	R	K	Q	A
C2B-01	7	11.5	90	0.2	1	1.5	1.5
C2B-02	7	19.5	90	0.2	1	1.5	1.5
Others	Pls specify D,L,V,R,K,Q,A						

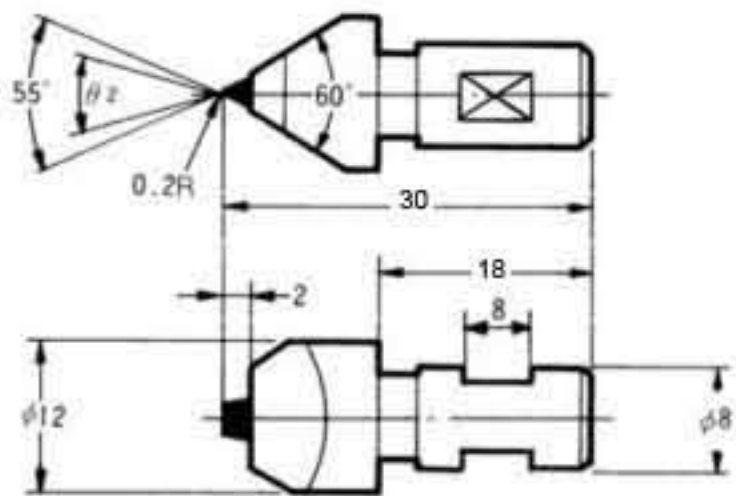
MULTIPOINT DRESSERS



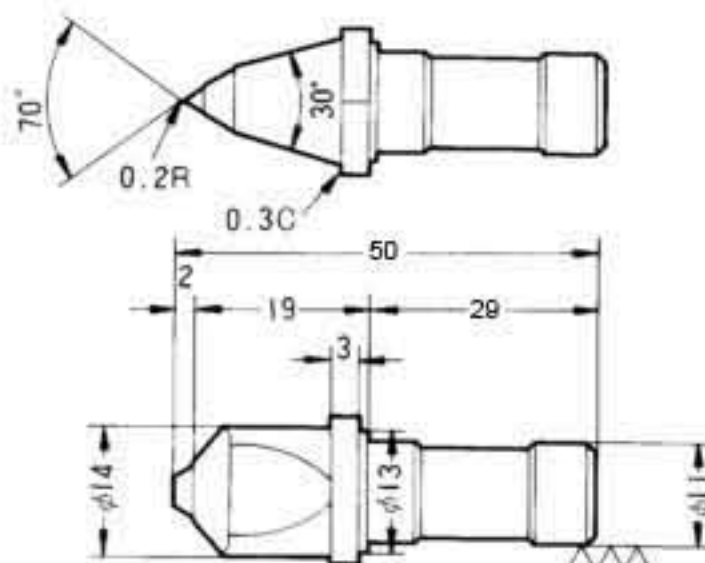
Code No	D	L
MD6-01	11	30
MD6-02	11	50
MD6-03	12	50

Code No	Angle	Axis Dimensions
MD7-01	0	
MD7-02	-10°	
MD7-03	0	
MD7-04	-10°	

FORMING DRESSERS



Code No FD1-01



Code No FD2-01

IMPREGNATED BOND DRESSERS



SPECIFICATION

BD - 1M

Mark	Grit
C	Coarse
M	Medium
F	Fine

Code No	D1	X	D	L
BD 101	3	3	8	50
BD 102	3	5	10	50
BD 103	3	8	11	50

Shape	Code No.	Diamond part dimensions	Axis Dimensions
	BD	111	6d x 7x
		112	8d x 7x
		113	10d x 7x
	BD	212	4W x 10L x 10x
		222	6W x 13L x 7x
		232	6W x 20L x 7x
	BD	310	4W x 10L x 8X x 15°
		320	6W x 13L x 8X x 15°
		330	6W x 20L x 8X x 15°